

PROGRAM

# 1<sup>ST</sup> INTERNATIONAL CONGRESS CONECTA PERINATAL - ASMI WAIMH-ESPAÑA



## FAMILIES AND PARENTINGS: CURRENT CROSSROADS

[CONGRESOPSIPERINATALIDAD.COM](http://CONGRESOPSIPERINATALIDAD.COM)

ONLINE

February 20, 21 and 22 **2025**

- Mothers and fathers
- Obstetricians
- Midwives
- Neonatologists, Pediatric
- Neonatologists

- Physiotherapists
- Psychiatrists
- Psychologists
- Early attention
- Social workers

- Anthropologists
- Ethnographers
- Lawyers
- Judges
- Faculty

- Speech therapists
- Psychomotorists
- Others



**ASMI - WAIMH España** ASMI ES

ASOCIACIÓN PARA LA SALUD MENTAL INFANTIL DESDE LA GESTACIÓN

en alianza con



**Conecta Perinatal** CONECTAPERINATAL.COM

ALIANZA HISPANOHABLANTE POR LA SALUD MENTAL PERINATAL



## PROGRAM INDEX

- PRESENTATION	03	- REGISTRATIONS AND RATES	12
- PROGRAM	05	- CONGRESS SCHEDULES	13
- SPEAKERS AND PRESENTATIONS	05	Thursday 20	14
- HONOR COMMITTEE	07	Friday 21	15
- GENERAL WORK REGULATIONS	07	Saturday 22	16
- CENTRAL PRESENTATIONS AND SYMPOSIUMS	08	- ORGANIZING ENTITIES	15
- POSTERS	09	- WAIMH	16
- FREE COMMUNICATIONS	10	- ASMI	17
- KEY DATES	11	- PERINATAL CONNECTS	18
		- CONECTA PERINATAL ENTITIES	19
		- ORGANIZING COMMITTEE	21
		- SPONSORS	22



## PRESENTATION

**T**his 1st International Congress of CONECTA PERINATAL - ASMI WAIMH-Spain, will be held online on February 20, 21 and 22, 2025.

It will consist of twelve symposiums as well as numerous keynote presentations by leading international specialists from the field of perinatal, child and family mental health.

The organization of this congress is carried out by the Spanish-speaking Alliance for Perinatal and Family Mental Health "Conecta Perinatal" (<https://cargaperinatal.com>) and ASMI WAIMH-Spain (<http://asmi.es>), with the close collaboration of the World WAIMH (<https://waimh.org>), the Global Alliance for Maternal Mental Health (GAMMH) (<https://www.gammh.org>), and the European Association of Psychopathologie de l'Enfant et de l'Adolescent (<https://www.aepea.org>). The objective of this conference on "Families and parenting: current crossroads" is to promote quality care for the mental health of mothers, fathers and their babies from preconception.

The family, as the fundamental nucleus of society, plays a crucial role in the development and wellbeing of its members. In this conference, we will explore the crossroads that families face in raising their children and how professionals from various disciplines and geographic locations can contribute to strengthening these vital units.

The congress aims to facilitate meetings, scientific communication, interdisciplinary exchanges and the development of regional, national and international solidarity alliances, between public and private socio-health services and public or private entities that defend family rights.

**"Parenting is a journey full of challenges and opportunities."**

This conference gives us the opportunity to learn, share and strengthen the support network that is the family. Together, we can build a world where every boy, every girl, grows up surrounded of love, care and respect.





## SOME OF THE TOPICS THAT MAY BE ADDRESSED:

### 1 Challenges in Parenting

Family Diversity: We will address the diversity of family structures and how they influence parenting.

Technology and Parenting: How does technology affect the relationship between parents and children? Work-Family Balance: We will analyze strategies to reconcile work and family responsibilities. Parenting in emergency and extreme circumstances.

### 2 Family Health and Wellbeing

Maternal and Child Health: We will examine advances in obstetrics, neonatology and pediatrics, assisted reproduction...

Mental Health: How does parents' mental health impact parenting and vice versa? What strategies and programs for the prevention of perinatal, childhood and parental psychopathology are promoted in different parts of the world?

Early Care: Importance of early detection and support in child development.

### 3 Social and Cultural Perspectives

Anthropology and Ethnography: We will analyze cultural differences in parenting and ways of caring for families.

Legal Issues: What legal challenges do families face today?

Architecture and Family Spaces: We will explore how home design affects family life and we will listen to proposals to take care of it.

### 4 Education and Child Development

Speech therapy and psychomotor skills: Tools for communicative and motor development.

Education 0-6: Psychological and pedagogical strategies for the care of babies, children and families. Formation of Values: The role of the family in the transmission of values in different places around the world.

## THIS CONGRESS WILL HOST:

Institutions, organizations and professionals working on projects related to outpatient and inpatient joint father-mother-baby care devices; maternity centers linked to proximity perinatal networks; associations of users and affected families; interdisciplinary services for perinatal mental health care; coordinated socio-health networks for the prevention and monitoring of perinatal psychopathology; mother-father-baby therapeutic outpatient centers; parental care spaces; mother-child centers; baby shelter spaces; perinatal psychopathology prevention and care units; social health home care teams; social teams for prevention and perinatal mental health care; mobile outpatient home care teams for families far from urban centers; teams of midwives, gynecologists and pediatricians; 0-3 educators sensitized to detecting signs of suffering in babies and families in coordination with early care centers; teachers and professionals from educational centers and educational guidance teams; prenatal education and prevention programs; programs for early detection of the risk of pre- and postnatal perinatal psychopathology; early detection programs for developmental risk in babies; scales and procedures for early screening and assessment and detection of developmental risk in infants; intervention programs and models in risk situations and the manifestation of psychopathology in babies; social and educational programs to raise awareness and prevent perinatal psychopathology; social, anthropological and ethnographic research related to perinatal, childhood and family.



## PROGRAM

- Live interventions will allow questions to be asked live to the speakers through online registration.
- Both the main presentations and the symposiums in Spanish simultaneously will be animated by a speaker coordinator and a question moderator.
- Keynote presentations in English or Spanish will have a consecutive translation into Spanish or English.
- TC = consecutive translation.
- Symposiums in German, French, English, Italian and Portuguese will have a moderator and a consecutive translation at the end of the symposium for a period of 40 minutes to ask questions to the speakers.
- The texts of the presentations in German, French, English, Italian and Portuguese, with a duration of 20 minutes, will be available to attendees in English or Spanish before the start of the Congress.

ROOM A  (Plenary room)

ROOM B 

More info in  
[www.congresopsiperinatalidad.com](http://www.congresopsiperinatalidad.com)



## 1<sup>ST</sup> DAY THURSDAY

# 20

THURSDAY 20 MORNING

THURSDAY 20 AFTERNOON

(PROGRAM IN SEPTEMBER)

## 2<sup>ST</sup> DAY FRIDAY

# 21

FRIDAY THE 21ST MORNING

FRIDAY 21 AFTERNOON

(PROGRAM IN SEPTEMBER)

## 3<sup>RD</sup> DAY SATURDAY

# 22

SATURDAY 22 MORNING

SATURDAY 22 AFTERNOON

(PROGRAM IN SEPTEMBER)

## ABOUT THE PRESENTATIONS

- Live interventions will allow questions to be asked live to the speakers through an online registration.
- Both the main presentations and the symposiums in Spanish simultaneously will be animated by a speaker coordinator, question moderator
- The main presentations in English or Spanish will have a consecutive translation into Spanish or English.
- TC = consecutive translation.
- Symposiums in German, French, English, Italian and Portuguese will have a moderator and a consecutive translation at the end of the symposium for a period of 40 minutes to ask questions to the speakers.
- The texts of the presentations in German, French, English, Italian and Portuguese, with a duration of 20min They will be available to attendees in English and Spanish before the start of the Congress.



## SPEAKERS

Ana García Blanco  
Antonio Hernández Díaz  
Alain Grégoire  
Alba Roca Lecumberri  
Alejandra Taborda  
Alicia Oiberman  
Bernard Golse  
Bianca Serrano Manzano  
Bruma Palacios Hernández  
Campbell Paul  
Carmen Naranjo Díaz  
Celeste Gómez  
Claudia Yereni Jiménez García  
Cristina López Ferret  
Carmen Carballo Basadre  
Denis Mellier  
Elizabeth Ormart  
Fernando Pérez del Río

Frederic Van der Borght  
Florencia Balconi  
Gemma Parramon Puig  
Gemma Lerida Millán  
Gina Hernández Santillán  
González María Aurelia  
Itzal Puchol Martínez  
Juan Jorge Michel Fariña  
Jazmín Alfie  
Jennifer Waldheim  
Jordi A. Jauset Berrocal  
Laura Pina Camacho  
Laura Álvarez-Cienfuego Cercas  
Lavinia Manu  
Manuel Hurtado Fernández  
María Aurelia González  
María Ángeles Carranza  
María Elena Crespo Arce

María Fernanda Bautista  
María Paula Moretti  
Marina Torrecilla  
Marie Rose Moro  
Margarita Sarahí Martínez  
Margarita López Anadón  
Mónica Cardenal  
Miri Keren  
Michel Dugnat  
Paula Moretti  
Pascual Palau Subiela  
Patricia Díaz  
Rosa Jaitin  
Susana Andrés Perpiñá  
Valeria Vianelo Dri



## HONOR COMMITTEE

- **Elma Saiz** - Minister of Inclusion, Social Security and Migration
- **Francisco Santolaya Ochando** - President of the General Council of Psychology of Spain
- **Nel González Zapico** - President of the Confederation of Mental Health Spain
- **Pascual Palau Subiela** - President of the Spanish-Speaking Alliance for Perinatal Mental Health and Family "Conecta Perinatal" and of ASMI WAIMH-Spain
- **Alain Grégoire** - President of the Maternal Mental Health Alliance
- **Michel Dugnat** - President of the Francophone Alliance for Perinatal Mental Health
- **Campbell Paul** - Former President of the World Association for Infant Mental Health
- **Miguel Hoffmann** - Honorary President of the Argentine Society of Early Childhood
- **Bernard Golse** - President of the European Association of Child and Adolescent Psychopathology
- **José Luis Pedreira Massa** - Scientific Coordinator of the Mental Health Strategy of the SNS and Member of the Scientific Council of Conecta Perinatal and of the Board of ASMI.





## GENERAL PRESENTATION REGULATIONS OF WORK FOR CONGRESS



## CENTRAL PRESENTATIONS AND PRESENTATIONS AT SYMPOSIUMS

- 1 The maximum number of signatories per work is limited to 6, including the main author and/or presenter. Indicate the name and email of the author who will present the work.
- 2 To present a work at least one of the authors must be registered at the Congress.
- 3 Each registered person may send a maximum of 2 job proposals. Her name cannot appear in more than two.
- 4 The proposal for presentation of works requires sending a summary of each work with a maximum length of 300 words, indicating the name of the author(s) and email address of the main presenting author.
- 5 For each presentation, as many work presentation certificates will be delivered as there are authors registered.
- 6 For each presentation, as many certificates will be delivered as there are registered people. The name of the author and registered co-authors must appear with both surnames preceded by the first name. The order in which the authors appear will be the one used for the subsequent edition of the certificates that will be delivered at the congress, as well as in the publications.
- 7 The sending of the works will be made to the following email: [info@congresopsiperinatidad.com](mailto:info@congresopsiperinatidad.com)
- 8 The authors of the central presentations, presentations at symposiums and free communications, unless expressly communicated otherwise, give permission to CONECTA PERINATAL and ASMI WAIMH-España for them to be published on the website of both entities and in the conference book. , with express waiver of the author's economic rights, with full preservation of their intellectual rights in paper and digital format.
  - The texts of the presentations will not exceed 3000 words, those of the free communications 1500 words, and must be sent before December 15, 2024 to [info@congresopsiperinatidad.com](mailto:info@congresopsiperinatidad.com)
  - It is recommended to follow the APA (American Psychological Association) / Vancouver regulations, in its latest editions.





## POSTERS

### RULES FOR PRESENTING POSTERS

- Posters must be sent in PDF format through Wetransfer to be evaluated.
- Once accepted, a video file must be sent in MP4 format, with a maximum duration of 5 minutes.
- It is recommended to follow the APA (American Psychological Association) / Vancouver regulations, in its latest editions.
- Posters that have the following structure will be prioritized:
  - a. Introduction
  - b. Objectives and/or Hypotheses
  - c. Justification
  - d. Method (type of design; sample; instruments)
  - e. Results
  - f. Discussion and/or Conclusions
- Dimensions: 0.90 m wide x 1.20 m high (vertical format). DIN A0.
- The best poster presented at the congress will be recognized with a special mention.





## FREE COMMUNICATIONS

### RULES FOR PRESENTING FREE COMMUNICATIONS

- The author will send a video file in MP4 format, with a maximum duration of 10 minutes, in which he/she will present his/her work. It will be sent via We Transfer.
- You can make the presentation supported by a Power Point presentation so that the presentation can be seen in the video and the speaker's voice can be heard simultaneously.
- If visual support is not used, the video will show the speaker.
- Those registered for the conference will have an email address to make inquiries to the authors. It will be necessary to provide an address for this purpose.
- The text of the oral communication, with a maximum length of 1500 words, could be published in the magazine NACIENDO, as long as it complies with the publication standards, made available for communication proposals. To do this, the authors will have to send the complete work (and adapted to these standards) through [info@congresopsiperinatalidad.com](mailto:info@congresopsiperinatalidad.com)





## KEY DATES

Deadline for submission of papers

**December 15, 2024**

Deadline for sending free communications and posters

**January 15, 2025**

Start date of registration for the Conference:

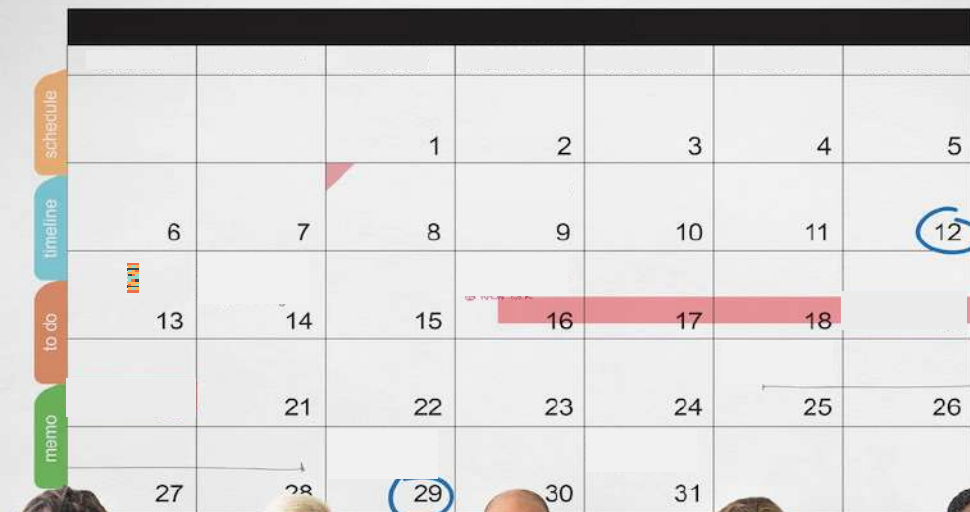
**June 1, 2024**

There is the possibility that the presentations and free communications will be published in the congress book, if they have been selected.

The sending of the works will be made to the following email:

[info@congresopsiperinatalidad.com](mailto:info@congresopsiperinatalidad.com)

Registration deadline for the Conference: **February 17, 2025**





## REGISTRATIONS



## REGISTRATIONS

**DATES: February 20, 21 and 22, 2025 ONLINE CONFERENCES**

The congress is open to mothers, fathers and professionals in obstetrics, midwifery, neonatology, pediatrics, psychiatry, psychology, early care, social work, 0-6 education, anthropology, ethnography, law, judiciary, architecture, speech therapy, psychomotor skills, physiotherapy, etc

### REGISTRATIONS

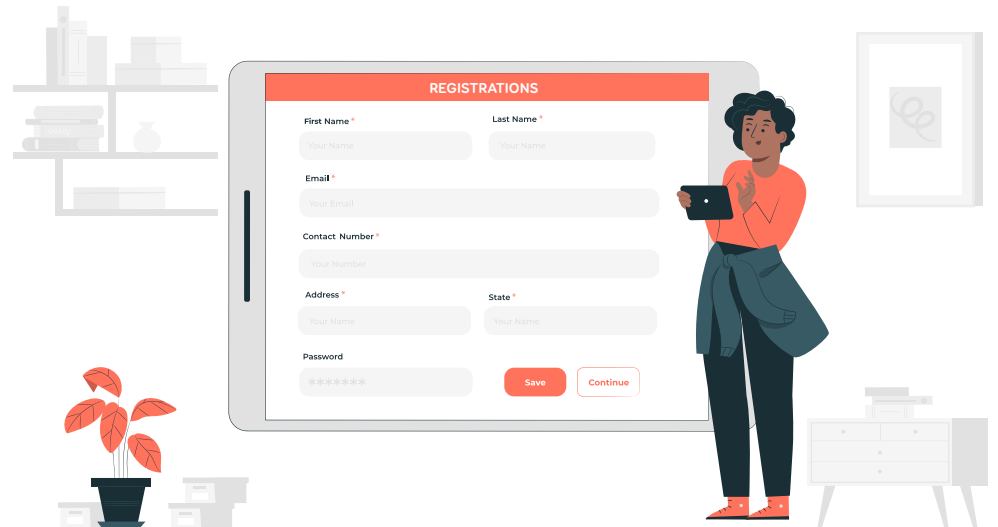
We encourage you to present your work, attend the online congress and participate in a great solidarity project whose main objective is for all Spanish-speaking countries to develop quality national and supranational policies on perinatal and family mental health, in order to achieve coordinated and excellent health and social assistance, caregiver of perinatal mental health and the family.

### YOU CAN REGISTER

From June 1, 2024 on the Congress website [www.congresopsiperinatalidad.com](http://www.congresopsiperinatalidad.com)

### AND AFTER THE CONGRESS

At the end of the conference, and over the course of 2 months, all the symposiums, as well as the main presentations or debate spaces, in addition to the communications and posters, will be available on the congress website, so that



## TARIFAS

We offer a registration fee for countries based on high, middle and low income. To qualify for registration category, your country of residence must appear on the official World Bank 2023-24 list.

[Click here](#) to see your country in the World Bank country classification:

### AREA A

- €160 For the general public.
- €90 For members of any of the institutions that constitute the Alliance.
- €90 For students of an official master's degree, degree or doctorate, as well as unemployed people who can justify it.

### AREA B

- €55 For the general public.
- €30 For members of any of the institutions that constitute the Alliance.
- €30 For students of an official master's degree, degree or doctorate, as well as unemployed people who can justify it.

### AREA C

- €35 For the general public.
- €20 For members of any of the institutions that constitute the Alliance.
- €20 For students of an official master's degree, degree or doctorate, as well as unemployed people who can justify it.



### Classification according to World Bank

High income: high income (AREA)

Lower middle income, Upper middle income: average income (AREA B)

Low income: low income (AREA C)£

These rates will increase starting December 15, 2024:



### AREA A

- €180 For the general public.
- €100 For members of any of the institutions that constitute the Alliance.
- €100 For students of an official master's degree, degree or doctorate, as well as unemployed people who can justify it.

### AREA B

- €60 For the general public.
- €45 For members of any of the institutions that constitute the Alliance.
- €45 For students of an official master's degree, degree or doctorate, as well as unemployed people who can justify it.

### AREA C

- €40 For the general public.
- €25 For members of any of the institutions that constitute the Alliance.
- €25 For students of an official master's degree, degree or doctorate, as well as unemployed people who can justify it.



## CONGRESS SCHEDULE





## SYMPOSIA AND PRESENTATIONS OF THE CONFERENCE

### 10 SIMPOSIOS con 37 ponencias

1. Maternal-infant bonding and maternal mental health
2. Bibliotherapy and cinematherapy in the medically assisted perinatal field
3. Pedagogy and Prenatal Education: Building health for the family and future generations from the beginning of life
4. Research and new advances in Perinatal Mental Health in Spain
5. Families and child-rearing in extreme situations and emergencies
6. Perinatal technology and families: a path of lights and shadows
7. Maternity and perinatal mental disorder: Multidisciplinary care model at the Mother-Baby Day Hospital
8. Uniting knowledge and reality to prevent abusive guardianships
9. International models of social-healthcare assistance to families in difficulty
10. Argentina. Lights and shadows in access to perinatal rights

### Keynote Presentations

- Today's families: All different, all the same!
- Parenthood: Control or support?
- Obstetric violence: A critical factor in the development of Maternal Post-Traumatic Stress Disorder
- Situations of neglect. Protection of the family triad father-mother-baby in "Aire de Famille"
- The young child, their parents, and the clinician in a catastrophic situation
- "We have a problem, Houston!": Consequences of parental immaturity
- Benefits of prenatal singing and the mother's voice during pregnancy
- Contributions of Perinatal Psychology to neonatal pain
- Perinatal mental health and family caregiver model: A paradigm shift
- Psychic envelopes and the adjustment of caregiving devices

TC: LANGUAGE INTERPRETATION

SALA A

Thursday Morning

OPENING CEREMONY OF THE 1ST INTERNATIONAL CONGRESS "Families and Parenting: Current Crossroads"

- 10:00 - 10:10 Opening by Mrs. Elma Saiz, Minister of Inclusion, Social Security and Migration
- 10:10 - 10:25 Mr. José Antonio Luengo Latorre, First Vice President of the General Council of Psychology of Spain
- 10:25 - 10:40 Dr. Pascual Palau, President of Conecta Perinatal and ASMI WAIMH-Spain
- 10:40 - 11:00 Mr. Nel González, President of the Mental Health Confederation of Spain
- 11:00 - 11:20 Dr. Alain Grégoire, President of the Maternal Mental Health Alliance
- 11:20 - 11:30 Rest
- 11:30 - 12:10 Inaugural conference: *Today's families: All different, all the same!*  
Dr. Marie Rose Moro, Child and adolescent psychiatrist, psychoanalyst, European reference in transcultural psychiatry
- 12:10 - 12:15 Closing of the opening ceremony

Thursday afternoon

KEYNOTE PRESENTATION

- |               |              |   |
|---------------|--------------|---|
| 14:00 - 14:05 | Presentation | PASCUAL PALAU SUBIELA   |
| 14:05 - 15:00 | Exposure     | TC (Francés) BERNARD GOLSE. Profesor de psiquiatría del niño y del adolescente, Universidad René Descartes. Presidente de la AEPEA. |
| 15:00 - 15:15 | Discussion   | <i>La parentalidad: ¿control o sostén?</i>  |

SYMPOSIUM 1

VÍNCULO MATERNO-INFANTIL Y SALUD MENTAL MATERNA

- |               |                      |   |
|---------------|----------------------|---|
| 15:30 - 15:35 | Presentation         | CARMEN FERRÁNDIZ FERRAGUD   |
| 15:35 - 15:55 | Lecture              | BRUMA PALACIOS HERNÁNDEZ. Doctora en Psicología Clínica y de la Salud   |
| 15:55 - 16:00 | Discusión            | <i>Retos y experiencias de la evaluación del Vínculo materno-infantil con la Entrevista Stafford en México</i>                          |
| 16:00 - 16:20 | Lecture              | CLAUDIA YERENI JIMÉNEZ GARCÍA. Psicóloga y maestra en salud pública con área de concentración en ciencias sociales y del comportamiento |
| 16:20 - 16:25 | Discusión            | <i>Vínculo materno-infantil en madres mexicanas con gestaciones por reproducción asistida y concepción natural ¿Hay diferencias?</i>    |
| 16:25 - 16:45 | Lecture              | MARÍA FERNANDA BAUTISTA VELLO. Psicóloga Clínica, salud mental perinatal  |
| 16:45 - 16:50 | Discusión            | <i>Calidad del vínculo materno-infantil tras el sismo del 19/S: un estudio comparativo en Morelos</i>                                   |
| 16:50 - 17:10 | Lecture              | MARGARITA SARAHÍ MARTÍNEZ RODRÍGUEZ. Psicóloga Clínica  |
| 17:10 - 17:30 | Discusión            | <i>Violencia de pareja, salud mental materna y vínculo materno-infantil: afectaciones en el embarazo y el posparto</i>                  |
| 17:30 - 17:45 | Symposium Discussion |   |

Thursday afternoon

KEYNOTE PRESENTATION

- |               |              |   |
|---------------|--------------|---|
| 14:00 - 14:05 | Presentation | PURIFICACIÓN SIERRA GARCÍA  |
| 14:05 - 15:00 | Lecture      | AMAIÁ HALTY BARRUTIETA. Doctora en psicología, investigadora en la Universidad Pontificia de Comillas |
| 15:00 - 15:15 | Discusión    | <i>Violencia Obstétrica: un factor crítico en el desarrollo de Estrés Postraumático Materno</i>       |

SYMPOSIUM 2

BIBLIOTERAPIA Y CINETERAPIA EN EL ÁMBITO PERINATAL MEDICAMENTE ASISTIDO

- |               |                      |  |
|---------------|----------------------|--|
| 15:30 - 15:35 | Presentation         | ELIZABETH ORMART   |
| 15:20 - 15:40 | Lecture              | ELIZABETH ORMART. Profesora adjunta UBA UNLaM. Directora de Investigaciones            |
| 15:40 - 15:45 | Discusión            | <i>Cine y series como escenarios de las transformaciones familiares</i>                |
| 15:45 - 16:05 | Lecture              | JUAN JORGE MICHEL FARIÑA. Doctor en Psicología. Profesor en la UBA                     |
| 16:05 - 16:10 | Discusión            | <i>Cineterapia: una puesta en abismo ético-analítica</i>                               |
| 16:10 - 16:30 | Lecture              | PATRICIA DIAZ. Psicóloga Especialista en Psicología Perinatal y de la Primera Infancia |
| 16:30 - 16:35 | Discusión            | <i>Biblioterapia perinatal, procesos perinatales a través de la literatura</i>         |
| 16:35 - 16:50 | Symposium Discussion |  |

BIBLIOTECA EDITORIAL ASMI

- |               |   |                            |
|---------------|---|----------------------------|
| 17:00 - 18:30 | Presentation  | PURIFICACIÓN SIERRA GARCÍA |
|               | NACIENDO  | JOSÉ LUIS PEDREIRA MASSA   |
|               | LA ADOPCIÓN: COMPRESIÓN PSICO(PATO)LÓGICA                     | JOSÉ LUIS PEDREIRA MASSA   |
|               | SUFRIMIENTO EMOCIONAL PERINATAL COMPARTIDO: ESTRÉS EN EL BEBÉ | PASCUAL PALAU SUBIELA      |
|               | MADRES, PADRES, BEBÉS, FAMILIAS Y DIVERSIDAD CULTURAL         | MARIE ROSE MORO            |
|               | MANUAL DE PSICOLOGÍA Y PSICOPATOLOGÍA PERINATAL E INFANTIL    | ANGELA DE LA HOZ MARTÍNEZ  |

## Friday Morning

## SYMPOSIUM 3

## PEDAGOGÍA y EDUCACIÓN PRENATAL: CONSTRUYENDO SALUD PARA LA FAMILIA Y LAS FUTURAS GENERACIONES DESDE EL INICIO DE LA VIDA

9:00 - 9:05	Presentation		ÁNGELA DE LA HOZ MARTÍNEZ
9:05 - 9:40	Lecture	TC (Inglés)	LAVINIA MANU. Médico y Presidenta de la OMAEP <i>Virtual Center of Prenatal Education</i>
9:40 - 9:45	Discusión		
9:45 - 10:05	Lecture		BIANCA SERRANO MANZANO. Profesora de la Universidad Internacional de la Rioja, departamento de Familia, Escuela y Sociedad <i>Educación y Pedagogía prenatal antes del nacimiento</i>
10:05-10:10	Discusión		
10.10-10:30	Lecture		GEMMA LÉRIDA MILLÁN. Naturopata orientada hacia la maternidad <i>La soledad del pos-parto en las familias mono y bi-parentales</i>
10.30-10:35	Discusión		
10.35-10.55	Lecture		CARMEN CARBALLO BASANDRE. Presidenta de ANEP, España <i>Educación Prenatal Natural. Creando vinculos afectivos sólidos y relaciones familiares sanas y armoniosas</i>
10.55-11:00	Discusión		
11:00 - 11:15	Symposium Discussion		

## Friday afternoon

## KEYNOTE PRESENTATION

14:00 - 14:05	Presentation		PASCUAL PALAU SUBIELA
14:05 - 15:00	Exposición	TC (Francés)	FREDERIC VAN DER BORGH. Psicólogo clínico, terapeuta familiar y haptopsicoterapeuta, director de "Aire de famille" <i>Situaciones de desamparo. Protección de la triada familiar padre-madre-bebé en "Aire de Famille"</i>
15:00 - 15:10	Discusión		

## SYMPOSIUM 5

## FAMILIAS Y CRIANZAS EN SITUACIONES EXTREMAS Y DE EMERGENCIAS

15:30 - 15:35	Presentation		RAFAEL LISBOA dos SANTOS
15:35 - 15:55	Lecture		MONICA CARDENAL. Profesora en Psiquiatría y Psicología infanto-juvenil. Universidad de Buenos Aires <i>Niños y adolescentes en un mundo en crisis. Intervenciones psicoanalíticas en emergencias</i>
15:55 - 16:00	Discusión		
16:00 - 16:20	Lecture		ROSA JAITIN. Referente en Psicoanálisis Vincular y de la Familia. Profesora emérita de la Universidad de Buenos Aires <i>Lo paterno en la crianza actual</i>
16:20 - 16:25	Discusión		
16:25 - 17:05	Lecture	TC (Portugués)	GABRIELA DAL FORNO MARTINS y ANGELITA HERRMANN. Directivas de la RED Estatal Primera Infancia de Rio Grande de Sul, Repi-FS <i>Garantizando el cuidado y los derechos de bebés y niños en el contexto de la inundación en Rio Grande del Sur, Brasil. Red Primera Infancia</i>
17:05 - 17:10	Discusión		
17:10 - 17:20	Symposium Discussion		

## KEYNOTE PRESENTATION

17:30 - 17:35	Presentation		PASCUAL PALAU SUBIELA
17:35 - 18:15	Lecture	TC (Francés)	MIRI KEREN. Psiquiatra infanto-juvenil. Profesora de la Universidad de Tel Aviv <i>El niño pequeño, sus padres y el clínico en una situación catastrófica</i>
18:15 - 18:30	Discusión		

## Thursday afternoon

## SYMPOSIUM 4

## INVESTIGACIÓN Y NUEVOS AVANCES EN SALUD MENTAL PERINATAL EN ESPAÑA

9:00 - 9:05	Presentation		GINA HERNANDEZ SANTILLÁN
9:05 - 9:25	Lecture		ANA GARCÍA BLANCO. <i>Psiquiatra en el Hospital La Fe, Valencia</i>
9:25 - 9:30	Discusión		<i>Unidad perinatal en el Hospital La Fe. Atención a madres con TMG</i>
9:30 - 9:50	Lecture		LAURA PINA CAMACHO. Psiquiatra en el Hospital Universitario Gregorio Marañón, Madrid <i>Estudio PremTEA</i>
9:50 - 9:55	Discusión		
9:55 - 10:15	Lecture		LAURA ÁLVAREZ-CIENFUEGO CERCAS. Psicóloga clínica en el Hospital Universitario Gregorio Marañón, Madrid <i>Abordaje clínico en padres con niños prematuros en H. Gregorio Marañón</i>
10:15 - 10:20	Discusión		
10:20 - 10:40	Lecture		GEMMA PARRAMON PUIG. Psiquiatra en el Hospital Universitario de la Vall d'Hebron, Barcelona <i>Aplicación para la prevención de la depresión postparto</i>
10:40 - 10:45	Discusión		
10:45 - 11:00	Symposium Discussion		
11:30 - 12:00	Presentation		PASCUAL PALAU SUBIELA. Presidente de "Conecta Perinatal" y de ASMI WAIMH-España

## Friday afternoon

## KEYNOTE PRESENTATION

14:00 - 14:05	Presentation		RAFAEL LISBOA dos SANTOS
14:05 - 15:00	Lecture		ANTONIO HERNÁNDEZ DÍAZ. Profesor Titular Emerito de Psicología Evolutiva y de la Educación de la ULL <i>¡Tenemos un problema, Houston!: Consecuencias de la inmadurez parental</i>
15:00 - 15:15	Discusión		

## SYMPOSIUM 6

## TECNOLOGIA PERINATAL Y FAMILIAS: UN CAMINO DE LUCES Y SOMBRAS

15:30 - 15:35	Presentation		MARIA AURELIA GONZÁLEZ
15:35 - 15:55	Lecture		FLORENCIA BALCONI. Psicóloga. Fundación Neonatológica A. Miguel Largaia. JAZMÍN ALFIE. Psicóloga. Hospital Materno Infantil Ramón Sarda. <i>El nacimiento en familia dentro de escenarios altamente tecnologizados</i>
15:55 - 16:00	Discusión		
16:00 - 16:20	Lecture		MARÍA ROSA RAMÍREZ. Psicóloga. Hospital Materno Infantil Ramón Sarda. MARÍA AURELIA GONZÁLEZ. Psicóloga. Directora Fundación Miguel Largaia <i>La encrucijada del alto riesgo durante el proceso perinatal</i>
16:20 - 16:25	Discusión		
16:25 - 16:45	Lecture		JENNIFER WALDHEIM. Psicóloga Perinatal. Hospital Humberto Notti. MARIANA TORRECILLA. Doctora en Psicología. Psicóloga Clínica perinatal e infantil <i>Salud Mental y Lactancia en UCIN</i>
16:45 - 16:50	Discusión		
16:50 - 17:00	Symposium Discussion		

## KEYNOTE PRESENTATION

17:30 - 17:35	Presentation		CARMEN CARBALLO BASANDRE
17:35 - 18:05	Lecture		MANUEL HURTADO FERNÁNDEZ. Educación prenatal natural ANEP, OMAEP. JORDI A. JAUSET BERROCAL. Profesor de piano e ingeniero y doctor de telecomunicación <i>Beneficios del canto prenatal y de la voz de la madre durante el embarazo</i>
18:05 - 18:15	Discusión		

## Saturday Morning

## SYMPOSIUM 7

## MATERNIDAD Y TRASTORNO MENTAL PERINATAL: MODELO DE ATENCIÓN MULTIDISCIPLINAR EN EL HOSPITAL DE DIA MADRE BEBÉ DEL HOSPITAL CLÍNIC BARCELONA

9:00 - 9:05	Presentation	GINA HERNÁNDEZ SANTILLÁN
9:05 - 9:25	Lecture	ALBA ROCA LECUMBERRI. Psiquiatra. Jefa de la Unidad de Salud Mental Perinatal del Hospital Clínic de Barcelona
9:25 - 9:30	Discusión	<i>Hospital de Día Madre Bebé: ¿Para qué y para quién?</i>
9:30 - 9:50	Lecture	CARMEN NARANJO DÍAZ. Psicóloga. Enfermera en salud mental perinatal
9:50 - 9:55	Discusión	<i>Enfermería de Práctica Avanzada en Salud Mental Perinatal: Evaluación e intervención en los cuidados al bebé</i>
9:55 - 10:15	Lecture	CRISTINA LÓPEZ FERRET. Trabajadora Social Sanitaria
10:15 - 10:20	Discusión	<i>El papel de Trabajo Social Sanitario en la atención a la vulnerabilidad social compleja</i>
10:20 - 10:40	Lecture	SUSANA ANDRÉS PERPIÑÁ. Psicóloga clínica
10:40 - 10:45	Discusión	<i>La mirada desde el bebé: Fomentando la crianza respetuosa</i>
10:45 - 11:00	Discusión del Simposio	

## KEYNOTE PRESENTATION

11:30 - 11:35	Presentation	GINA HERNÁNDEZ SANTILLÁN
11:35 - 12:05	Lecture	MARIA CELESTE GÓMEZ. Doctora en Psicología. Psicología Perinatal. Profesora Universidad de Buenos Aires
12:05 - 12:15	Discusión	<i>Aportes de la Psicología Perinatal al dolor neonatal</i>

## Saturday Afternoon

## SYMPOSIUM 9

## MODELOS INTERNACIONALES DE ASISTENCIA SOCIO-SANITARIA A LAS FAMILIAS EN DIFICULTAD

15:30 - 15:35	Presentation	PASCUAL PALAU SUBIELA
15:35 - 16:00	Lecture	PAULA MORETTI. Psicóloga
16:00 - 16:10	Discusión	<i>Sistema de Protección de Derechos de Infancias y Adolescencias en Argentina. Un Análisis Crítico de sus Prácticas Subjetivantes y Desubjetivantes</i>
16:10 - 16:55	Lecture	TC (Francés) VALERIA VIANELLO DRI. Neuropsiquiatra infantil y adolescente, Jefe de servicio de Neuropsiquiatría Infantil y Juvenil
16:55 - 17:05	Discusión	<i>Familias vulnerables: una mirada a algunas prácticas de innovación social solidaria y preventiva</i>
	DESCANSO	
17:20 - 18:00	Lecture	TC (Francés) MICHEL DUGNAT. Psiquiatra perinatal. Presidente de la Alianza Francófona en salud mental perinatal
18:00 - 18:10	Discusión	<i>¿De qué hay que proteger al niño?</i>
18:10 - 18:25	Discusión del simposio	
18:30 - 18:45	CLAUSSURA CONGRESO	

## Saturday Morning

## SYMPOSIUM 8

## UNIR CONOCIMIENTO Y REALIDAD PARA EVITAR TUTELAS ABUSIVAS

9:00 - 9:05	Presentation	MARGARITA HERNÁNDEZ / VICTORIANO FERNÁNDEZ
9:05 - 9:25	Lecture	M <sup>a</sup> ELENA CRESPO ARCE. Magistrada suplente en el Tribunal Superior de Justicia de La Rioja desde el año 2004
9:25 - 9:30	Discusión	<i>Los derechos fundamentales en el sistema de protección de menores actual español</i>
9:30 - 9:50	Lecture	FERNANDO PÉREZ DEL RÍO. Doctor en Psicología. Profesor de la Universidad de Burgos
9:50 - 9:55	Discusión	<i>¿Robo de niños en democracia?</i>
9:55 - 10:15	Lecture	MARÍA ANGELES CARRÁNZA. Maestra en Educación Primaria e Infantil
10:15 - 10:20	Discusión	<i>Salud mental infantil y parental en el ámbito educativo</i>
10:20 - 10:40	Lecture	MARGARITA LÓPEZ ANADÓN. Experta en derecho de familia, menores en riesgo y desamparo
10:40 - 10:45	Discusión	<i>El maltrato institucional de menores tutelados y sus familias</i>
10:45 - 11:00	Discusión del Simposio	

## KEYNOTE PRESENTATION

11:30 - 11:35	Presentation	PURIFICACIÓN SIERRA GARCÍA
11:35 - 12:05	Lecture	PASCUAL PALAU SUBIELA. Doctor, Especialista en Psicología clínica y de la salud. Psicomatólogo de bebés y niños/as
12:05 - 12:15	Discusión	<i>Modelo cuidador de la salud mental perinatal y de la familia: cambio de paradigma</i>

## Saturday Afternoon

## SYMPOSIUM 10

## ARGENTINA. LUCES Y SOMBRAS EN EL ACCESO A LOS DERECHOS PERINATALES

15:30 - 15:35	Presentation	ÁNGELA DE LA HOZ
15:35 - 15:55	Lecture	ALEJANDRA TABORDA. Doctora en Psicología. Profesora de la Universidad Nacional San Luis
15:55 - 16:00	Discusión	<i>Políticas públicas de promoción de salud perinatal. Sus deudas en el sostén de las paternidades</i>
16:00 - 16:20	Lecture	ELIZABETH ORMART. Profesora adjunta UBA UNLaM. Directora de Investigaciones
16:20 - 16:25	Discusión	<i>Dificultades y posibilidades que brinda el marco normativo a las neoparentalidades</i>
16:25 - 16:45	Lecture	ALICIA OIBERMAN. Doctora en Psicología. Investigadora adjunta del CONICET
16:45 - 16:50	Discusión	<i>La maternidad en pobreza</i>
16:50 - 17:00	Discusión del Simposio	

## KEYNOTE PRESENTATION

17:30 - 17:35	Presentation	CARMEN FERRÁNDIZ FERRAGUT
17:35 - 18:15	Lecture	TC (Francés) DENIS MELLIER. Doctor en Psicología Clínica. Profesor de Psicología de la Universidad Franche-Comté
18:15 - 18:25	Discusión	<i>Las envolturas psíquicas y el ajuste de los dispositivos de cuidados</i>

18:30 - 18:45 CLAUSSURA CONGRESO



## ORGANIZING ENTITIES

## WAIMH

World Association for Infant Mental Health

**World Association for Infant Mental Health** / <https://waimh.org/>

The World Association for Infant Mental Health (WAIMH) is a non-profit organization for scientific and educational professionals.

The central objective of WAIMH is to promote the mental well-being and healthy development of children around the world, taking into account cultural, regional and environmental variations, and to generate and disseminate scientific knowledge.

More specifically, WAIMH seeks to facilitate:

- Increased knowledge about mental development and disorders in children from conception to three years of age
- The dissemination of scientific knowledge on care, intervention and prevention services for mental disorders and deficiencies in childhood
- The dissemination of evidence-based knowledge on ways to support the developmental transition to parenthood, as well as the healthy aspects of parenting and care environments.
- The international cooperation of professionals concerned with promoting the optimal development of infants, as well as the prevention and treatment of mental disorders in the early years
- Aspects of research, education and interventions in the previous areas



1<sup>ER</sup> CONGRESO INTERNACIONAL  
FAMILIAS Y CRIANZAS: ENCRUCIJADAS ACTUALES



WORLD ASSOCIATION FOR  
**INFANT MENTAL HEALTH**

- WEB [www.waimh.org](http://www.waimh.org)
- INFO [info@waimh.org](mailto:info@waimh.org)



## ASMI - WAIMH SPAIN

Asociación para la Salud Mental Infantil desde la Gestación

**ASMI** (Association for Children's Mental Health from Pregnancy), is a national Pluridisciplinary Scientific Society that emerged as an initiative to join forces between a group of health and childhood education professionals and has become, since March 2006, the Spanish Branch of the WAIMH.

Through international and interdisciplinary cooperation, it promotes clinical intervention, research and training both in the field of normal development and perinatal and early childhood psychopathology.

Through regional and global conferences, as well as through publications, including the Journal of Infant Mental Health, it disseminates scientific, educational and clinical work aimed at young children and their caregivers.

### ASMI Objectives

- Promote the knowledge that childhood, from pregnancy, is a very sensitive and determining period in the bio-psycho-social development of individuals.
- Group together those professionals who are interested in or concerned with children's mental health from the care, prevention, treatment, research and education of the child, during the times of conception, gestation and early childhood.
- Promote interdisciplinary cooperation, inside and outside the Association, to share knowledge.
- Raise awareness among public opinion and the media.



- WEB
- EDITORIAL
- SECRETARY

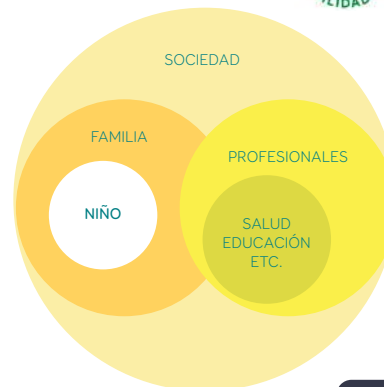
[www.asmi.es](http://www.asmi.es)

[www.asmieditorial.com](http://www.asmieditorial.com)

[secretaria.asmi@gmail.com](mailto:secretaria.asmi@gmail.com)

**Declared of Public Utility**

Public Utility recognition date:: 26-6-19



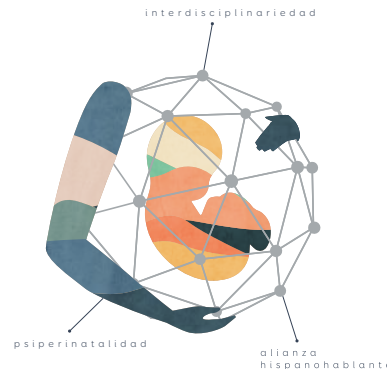
# CONECTA PERINATAL

An unprecedented connection in the Psyperinatal and Family sphere

Promoted by its creation by ASMI WAIMH Spain in June 2020, the Spanish-Speaking Alliance for Perinatal and Family Mental Health “CONECTA PERINATAL” is part of the dynamics of the World Alliance for Maternal Mental Health (<https://globalalliancematernalmentalhealth.org>) to which it has been a member since August 2020, and in close union with the Francophone Alliance for perinatal mental health (<https://alliance-psyperinat.org>), the Maternal Mental Health Alliance: ( <https://maternalmentalhealthalliance.org>) and the Canadian Alliance.

The Spanish-speaking Alliance for Perinatal and Family Mental Health “CONECTA PERINATAL”, which currently brings together 44 Spanish and Spanish-American institutions, aims to bring together the largest number of national and international Spanish-speaking associations of users, scientific societies and socio-health entities without desire. of profit to continuously promote an authentic prioritization of public policies related to the perinatal period, and, especially, its psychological and psychosocial dimensions, in order to achieve coordinated and excellent health and social care, caring for the Perinatal and family mental health.

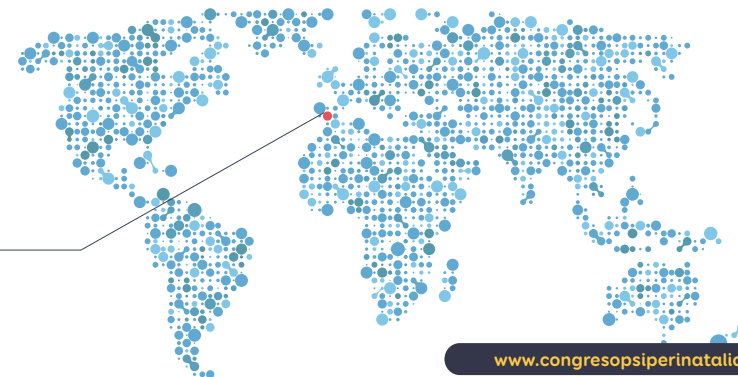
CONECTA PERINATAL aspires to promote the development of adapted and sustained care for families with the awareness and union of all professional caregivers of that period, facilitating an interdisciplinary and inter-institutional union. ASMI WAIMH Spain is the Spanish affiliate of the Word Association for Infant Mental Health (WAIMH).



- WEB [www.conectaperinatal.com](http://www.conectaperinatal.com)
- INFORMATION [info@conectaperinatal.com](mailto:info@conectaperinatal.com)



These are the entities linked to CONECTA PERINATAL:



3 PILLARS

Spanish-Speaking Alliance  
Psiperinatality  
Interdisciplinarity





## ENTITIES CONNECTED TO CONECTA PERINATAL

### YOU CAN JOIN CONECTA PERINATAL

Foundations, federations, scientific and social associations, national and international, public and private non-profit, and users, to continuously promote an authentic prioritization of public policies related to the perinatal period, especially in its psychological and psychosocial dimension.

You can request to be part of Conecta Perinatal in the following email: [info@conectaperinatal.com](mailto:info@conectaperinatal.com)

### List of entities that are currently part of CONECTA PERINATAL:

- Asociación Argentina de Psicología Perinatal ASAPP (Argentina)
- Asociación Civil Materna, Salud Mental Perinatal (Argentina)
- Asociación Española de Psicología Perinatal AEPP (España)
- Asociación Española de Psicología Clínica y Psicopatología (España)
- Asociación Española de Neuropsiquiatría - Profesionales de la salud mental AEN-PSM (España)
- Asociación para la defensa del menor APRODEME (España)
- Associació de Prematurs de Catalunya "Som Prematurs" (España)
- Asociación Dominicana de Psicología Perinatal ADPP (República Dominicana)
- Asociación para la Salud Mental Infantil desde la Gestación, ASMI WAIMH-ESPAÑA (España)
- Asociación APSA (España)
- Associació de Comares de la Comunitat Valenciana (España)
- Asociación Latinoamericana de Seguimiento Pediátrico y Neonatal ALSEPNEO (Latinoamérica y Caribe)
- Asociación Nacional de Educación Prenatal. ANEP (España)
- Asociación Mexicana de Salud Mental Perinatal (México)
- Asociación de Padres de Niños Prematuros APREM (España)
- Asociación para la Promoción e Investigación científica y cultural de la Lactancia Materna APILAM (España)
- Asociación Red Manos Unidas (Argentina)
- Centro de Investigación y Asistencia al Desarrollo CIAD (Argentina)
- Consejo General de Colegios Oficiales de Psicología de España (España)
- Confederación Internacional de Matronas ICM (Internacional)
- Confederación Salud Mental España (España)
- Colegio Oficial de la Psicología de Castilla y León (España)
- Colegio Oficial de Psicología de la Comunidad Valenciana (España)
- Colegio de Psicólogos de la Provincia de Buenos Aires Distrito X (Argentina)
- EDAI Clinical Services I Training I Research (España)
- Escuelas Infantiles Municipales de Pamplona (España)
- Facultad de Psicología Universidad Nacional del Mar de Plata (Argentina)
- Federació Salut Mental Comunitat Valenciana (España)
- Fundación Manantial - Casa Verde (España)
- Fundación Multifamilias (Argentina)
- Fundación Salud Infantil de Elche (España)
- Fundación Neonatológica para el Recién Nacido y su Familia FUNLARGUIA (Argentina)
- Hospital Pediátrico Dr. Humberto Nottli (Argentina)
- Instituto de Estudios Psicosomáticos y Psicoterapia Médica IEPPM (España)
- Institución Universitaria Colegios de Colombia-UNICOC (Colombia)
- Instituto Universitario de la Familia de la Universidad Pontificia de Comillas (España)
- Instituto Uruguayo de Lactancia Materna (Uruguay)
- Obra Social De Empleados Públicos OSEP (Argentina)
- Red Internacional de Etnografía con Niñas, Niños y Jóvenes RIENN (Internacional)
- Seminario de Intervención y Políticas Sociales, SIPOSO (España)
- Sección de Psicopatología de la Sociedad Española de Ginecología y Obstetricia SEGO (España)
- Servicio Salud Mental del Hospital Materno Infantil "Héctor Quintana" (Jujuy, Argentina)
- Sociedad Complejidad & Sufrimiento (Chile)
- Sociedad Argentina de Investigación en Observación de Bebés SAIOBB (Argentina)
- Sociedad Argentina de Primera Infancia SAPI (Argentina)
- Sociedad de Estudios Psicosomáticos Iberoamericana SEPIA (España)
- Universidad Nacional de San Luis (Argentina)



## ENTITIES CONNECTED TO CONECTA PERINATAL

An international alliance, a family without borders



## ORGANIZING COMMITTEE

THE TEAM BEHIND THIS CONGRESS

Ángela de la Hoz Martínez

Carmen Ferrándiz Ferragud

Elizabeth Ormart

Gabriela Santaella

Gina Hernández Santillán

José Luis Pedreira Massa

Joan Garcerá Belenguér

Lourdes Chacón Bueno

Margarita Alejandra Hernández Murillo

Mercedes Benac Prefaci

Nuria Camps Bellonch

Pablo Palau Garcerá

Pascual Palau Subiela

Pilar Ariño Arcos

Rafael Lisboa dos Santos

Rafael Domínguez Aguilar

Ruth Alejandra Taborda



1<sup>ER</sup> CONGRESO INTERNACIONAL  
FAMILIAS Y CRIANZAS: ENCRUCIJADAS ACTUALES



## SPONSORS AND COLLABORATORS

## SPONSORS

THESE ARE THE ENTITIES THAT SUPPORT THIS INITIATIVE

You can request to be a sponsor in the following email: [colabora@asmi.es](mailto:colabora@asmi.es)



**OMAEP** / [www.omaep.com](http://www.omaep.com)

**World Organization of Associations for Prenatal Education.**

The future parents of the world, prepared for conscious prenatal parenthood, participate in the emergence of a new humanity, peace and fraternity.

To promote the principles of conscious prenatal parenthood from before conception, by informing future parents, professionals and the general public.

To seek, gather and share scientific, psychological and spiritual knowledge concerning the influence of the inner life and behaviour of parents, especially the mother, on the prenatal development of the human being.

Collaborate with partners to disseminate prenatal education in all social backgrounds and approach policy-makers at local and international levels to develop a dissemination strategy in all countries.



**Agencia KEBO** / [www.keboagency.com](http://www.keboagency.com)

Digital marketing agency specialized in corporate image as well as the creation and digital organization of conferences, conferences and events. The agency also covers editorial services, layout and design, web development, graphic design, illustration, among others.



¡GRACIAS!

THANK YOU

:)

¡GRACIAS!  
THANK YOU!



WORLD ASSOCIATION FOR  
INFANT MENTAL HEALTH



Conecta Perinatal

WEB  
INFORMATION  
COLABORATIONS

[www.congresopsiperinatalidad.com](http://www.congresopsiperinatalidad.com)  
[info@congresopsiperinatalidad.com](mailto:info@congresopsiperinatalidad.com)  
[colabora@asmi.es](mailto:colabora@asmi.es)

EMISIÓN, DISEÑO, COMUNICACIÓN,  
SECRETARÍA TÉCNICA DEL EVENTO  
[WWW.KEBOAGENCY.COM](http://WWW.KEBOAGENCY.COM)  
[PABPALGAR@GMAIL.COM](mailto:PABPALGAR@GMAIL.COM)



C

L

A

S

V

R

A

C

O

N

G

R

E

S

O