

PROGRAM

# 1<sup>ST</sup> INTERNATIONAL CONGRESS CONECTA PERINATAL - ASMI WAIMH-ESPAÑA



## FAMILIES AND PARENTINGS: CURRENT CROSSROADS

[CONGRESOPSIPERINATALIDAD.COM](http://CONGRESOPSIPERINATALIDAD.COM)

ONLINE

February 20, 21 and 22 **2025**

- Mothers and fathers
- Obstetricians
- Midwives
- Neonatologists, Pediatric
- Neonatologists

- Physiotherapists
- Psychiatrists
- Psychologists
- Early attention
- Social workers

- Anthropologists
- Ethnographers
- Lawyers
- Judges
- Faculty

- Speech therapists
- Psychomotorists
- Others



**ASMI - WAIMH España** ASMI ES

ASOCIACIÓN PARA LA SALUD MENTAL INFANTIL DESDE LA GESTACIÓN

en alianza con



**Conecta Perinatal** CONECTAPERINATAL.COM

ALIANZA HISPANOHABLANTE POR LA SALUD MENTAL PERINATAL



## ÍNDICE DEL PROGRAMA

- PRESENTATION	03	- ORGANIZING ENTITIES	15
- PROGRAM	05	- WAIMH	16
- SPEAKERS AND PRESENTATIONS	05	- ASMI	17
- GENERAL WORK REGULATIONS	07	- PERINATAL CONNECTS	18
- CENTRAL PRESENTATIONS AND SYMPOSIUMS	08	- CONECTA PERINATAL ENTITIES	19
- POSTERS	09	- ORGANIZING COMMITTEE	21
- FREE COMMUNICATIONS	10	- SPONSORS	22
- KEY DATES	11		
- REGISTRATIONS AND RATES	12		
- CONGRESS SCHEDULES	13		
(They will be carried out soon)			
Thursday 20	14		
Friday 21	15		
Saturday 22	16		



## PRESENTATION

**T**his 1st International Congress of CONECTA PERINATAL - ASMI WAIMH-Spain, will be held online on February 20, 21 and 22, 2025.

It will consist of twelve symposiums as well as numerous keynote presentations by leading international specialists from the field of perinatal, child and family mental health.

The organization of this congress is carried out by the Spanish-speaking Alliance for Perinatal and Family Mental Health "Conecta Perinatal" (<https://cargaperinatal.com>) and ASMI WAIMH-Spain (<http://asmi.es>), with the close collaboration of the World WAIMH (<https://waimh.org>), the Global Alliance for Maternal Mental Health (GAMMH) (<https://www.gammh.org>), and the European Association of Psychopathologie de l'Enfant et de l'Adolescent (<https://www.aepea.org>). The objective of this conference on "Families and parenting: current crossroads" is to promote quality care for the mental health of mothers, fathers and their babies from preconception.

The family, as the fundamental nucleus of society, plays a crucial role in the development and wellbeing of its members. In this conference, we will explore the crossroads that families face in raising their children and how professionals from various disciplines and geographic locations can contribute to strengthening these vital units.

The congress aims to facilitate meetings, scientific communication, interdisciplinary exchanges and the development of regional, national and international solidarity alliances, between public and private socio-health services and public or private entities that defend family rights.

**"Parenting is a journey full of challenges and opportunities."**

This conference gives us the opportunity to learn, share and strengthen the support network that is the family. Together, we can build a world where every boy, every girl, grows up surrounded of love, care and respect.





## SOME OF THE TOPICS THAT MAY BE ADDRESSED:

### 1 Challenges in Parenting

Family Diversity: We will address the diversity of family structures and how they influence parenting.

Technology and Parenting: How does technology affect the relationship between parents and children? Work-Family Balance: We will analyze strategies to reconcile work and family responsibilities. Parenting in emergency and extreme circumstances.

### 2 Family Health and Wellbeing

Maternal and Child Health: We will examine advances in obstetrics, neonatology and pediatrics, assisted reproduction...

Mental Health: How does parents' mental health impact parenting and vice versa? What strategies and programs for the prevention of perinatal, childhood and parental psychopathology are promoted in different parts of the world?

Early Care: Importance of early detection and support in child development.

### 3 Social and Cultural Perspectives

Anthropology and Ethnography: We will analyze cultural differences in parenting and ways of caring for families.

Legal Issues: What legal challenges do families face today?

Architecture and Family Spaces: We will explore how home design affects family life and we will listen to proposals to take care of it.

### 4 Education and Child Development

Speech therapy and psychomotor skills: Tools for communicative and motor development.

Education 0-6: Psychological and pedagogical strategies for the care of babies, children and families. Formation of Values: The role of the family in the transmission of values in different places around the world.

## THIS CONGRESS WILL HOST:

Institutions, organizations and professionals working on projects related to outpatient and inpatient joint father-mother-baby care devices; maternity centers linked to proximity psiperinatal networks; associations of users and affected families; interdisciplinary services for perinatal mental health care; coordinated socio-health networks for the prevention and monitoring of perinatal psychopathology; mother-father-baby therapeutic outpatient centers; parental care spaces; mother-child centers; baby shelter spaces; perinatal psychopathology prevention and care units; social health home care teams; social teams for prevention and perinatal mental health care; mobile outpatient home care teams for families far from urban centers; teams of midwives, gynecologists and pediatricians; 0-3 educators sensitized to detecting signs of suffering in babies and families in coordination with early care centers; teachers and professionals from educational centers and educational guidance teams; prenatal education and prevention programs; programs for early detection of the risk of pre- and postnatal perinatal psychopathology; early detection programs for developmental risk in babies; scales and procedures for early screening and assessment and detection of developmental risk in infants; intervention programs and models in risk situations and the manifestation of psychopathology in babies; social and educational programs to raise awareness and prevent perinatal psychopathology; social, anthropological and ethnographic research related to perinatal, childhood and family.





## PROGRAM

- Live interventions will allow questions to be asked live to the speakers through online registration.
- Both the main presentations and the symposiums in Spanish simultaneously will be animated by a speaker coordinator and a question moderator.
- Keynote presentations in English or Spanish will have a consecutive translation into Spanish or English.
- TC = consecutive translation.
- Symposiums in German, French, English, Italian and Portuguese will have a moderator and a consecutive translation at the end of the symposium for a period of 40 minutes to ask questions to the speakers.
- The texts of the presentations in German, French, English, Italian and Portuguese, with a duration of 20 minutes, will be available to attendees in English or Spanish before the start of the Congress.

**ROOM A**  (Plenary room)

**ROOM B** 

More info in  
[www.congresopsiperinatalidad.com](http://www.congresopsiperinatalidad.com)



1<sup>st</sup> DAY

# THURSDAY

# 20

THURSDAY 20 MORNING

THURSDAY 20 AFTERNOON

(PROGRAM IN SEPTEMBER)

2<sup>ST</sup> DAY

# FRIDAY

# 21

FRIDAY THE 21<sup>ST</sup> MORNING

FRIDAY 21 AFTERNOON

(PROGRAM IN SEPTEMBER)

3<sup>RD</sup> DAY

# SATURDAY

# 22

SATURDAY 22 MORNING

SATURDAY 22 AFTERNOON

(PROGRAM IN SEPTEMBER)





## GENERAL PRESENTATION REGULATIONS OF WORK FOR CONGRESS

## CENTRAL PRESENTATIONS AND PRESENTATIONS AT SYMPOSIUMS

- 1 The maximum number of signatories per work is limited to 6, including the main author and/or presenter. Indicate the name and email of the author who will present the work.
- 2 To present a work at least one of the authors must be registered at the Congress.
- 3 Each registered person may send a maximum of 2 job proposals. Her name cannot appear in more than two.
- 4 The proposal for presentation of works requires sending a summary of each work with a maximum length of 300 words, indicating the name of the author(s) and email address of the main presenting author.
- 5 For each presentation, as many work presentation certificates will be delivered as there are authors registered.
- 6 For each presentation, as many certificates will be delivered as there are registered people. The name of the author and registered co-authors must appear with both surnames preceded by the first name. The order in which the authors appear will be the one used for the subsequent edition of the certificates that will be delivered at the congress, as well as in the publications.
- 7 The sending of the works will be made to the following email: [info@congresopsiperinatidad.com](mailto:info@congresopsiperinatidad.com)
- 8 The authors of the central presentations, presentations at symposiums and free communications, unless expressly communicated otherwise, give permission to CONECTA PERINATAL and ASMI WAIMH-España for them to be published on the website of both entities and in the conference book. , with express waiver of the author's economic rights, with full preservation of their intellectual rights in paper and digital format.
  - The texts of the presentations will not exceed 3000 words, those of the free communications 1500 words, and must be sent before December 15, 2024 to [info@congresopsiperinatidad.com](mailto:info@congresopsiperinatidad.com)
  - It is recommended to follow the APA (American Psychological Association) / Vancouver regulations, in its latest editions.





## POSTERS

### RULES FOR PRESENTING POSTERS

- Posters must be sent in PDF format through Wetransfer to be evaluated.
- Once accepted, a video file must be sent in MP4 format, with a maximum duration of 5 minutes.
- It is recommended to follow the APA (American Psychological Association) / Vancouver regulations, in its latest editions.
- Posters that have the following structure will be prioritized:
  - a. Introduction
  - b. Objectives and/or Hypotheses
  - c. Justification
  - d. Method (type of design; sample; instruments)
  - e. Results
  - f. Discussion and/or Conclusions
- Dimensions: 0.90 m wide x 1.20 m high (vertical format). DIN A0.
- The best poster presented at the congress will be recognized with a special mention.





## FREE COMMUNICATIONS

### RULES FOR PRESENTING FREE COMMUNICATIONS

- The author will send a video file in MP4 format, with a maximum duration of 10 minutes, in which he/she will present his/her work. It will be sent via We Transfer.
- You can make the presentation supported by a Power Point presentation so that the presentation can be seen in the video and the speaker's voice can be heard simultaneously.
- If visual support is not used, the video will show the speaker.
- Those registered for the conference will have an email address to make inquiries to the authors. It will be necessary to provide an address for this purpose.
- The text of the oral communication, with a maximum length of 1500 words, could be published in the magazine NACIENDO, as long as it complies with the publication standards, made available for communication proposals. To do this, the authors will have to send the complete work (and adapted to these standards) through [info@congresopsiperinatalidad.com](mailto:info@congresopsiperinatalidad.com)





## KEY DATES

Deadline for submission of papers

**December 15, 2024**

Deadline for sending free communications and posters

**January 5, 2025**

Start date of registration for the Conference:

**June 1, 2024**

There is the possibility that the presentations and free communications will be published in the congress book, if they have been selected.

The sending of the works will be made to the following email:

[info@congresopsiperinatalidad.com](mailto:info@congresopsiperinatalidad.com)

Registration deadline for the Conference: **February 17, 2025**

			1	2	3	4	5
6	7	8	9	10	11	12	
13	14	15	16	17	18		
	21	22	23	24	25	26	
27	28	29	30	31			





## REGISTRATIONS





## REGISTRATIONS

**DATES: February 20, 21 and 22, 2025 ONLINE CONFERENCES**

The congress is open to mothers, fathers and professionals in obstetrics, midwifery, neonatology, pediatrics, psychiatry, psychology, early care, social work, 0-6 education, anthropology, ethnography, law, judiciary, architecture, speech therapy, psychomotor skills, physiotherapy, etc

### REGISTRATIONS

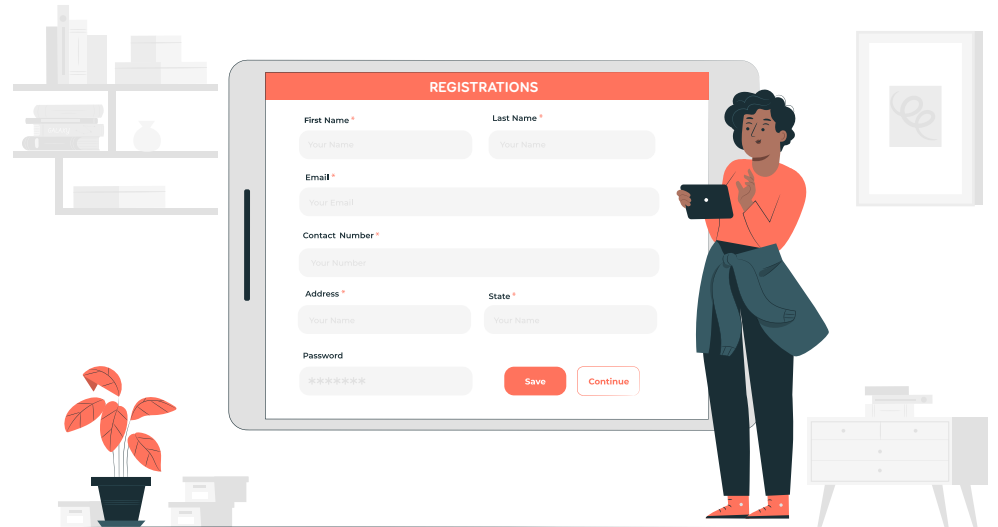
We encourage you to present your work, attend the online congress and participate in a great solidarity project whose main objective is for all Spanish-speaking countries to develop quality national and supranational policies on perinatal and family mental health, in order to achieve coordinated and excellent health and social assistance, caregiver of perinatal mental health and the family.

### YOU CAN REGISTER

From June 1, 2024 on the Congress website [www.congresopsiperinatalidad.com](http://www.congresopsiperinatalidad.com)

### AND AFTER THE CONGRESS

At the end of the conference, and over the course of 2 months, all the symposiums, as well as the main presentations or debate spaces, in addition to the communications and posters, will be available on the congress website, so that



## TARIFAS

We offer a registration fee for countries based on high, middle and low income. To qualify for registration category, your country of residence must appear on the official World Bank 2023-24 list.

[Click here](#) to see your country in the World Bank country classification:

### AREA A

- €160 For the general public.
- €90 For members of any of the institutions that constitute the Alliance.
- €90 For students of an official master's degree, degree or doctorate, as well as unemployed people who can justify it.

### AREA B

- €55 For the general public.
- €30 For members of any of the institutions that constitute the Alliance.
- €30 For students of an official master's degree, degree or doctorate, as well as unemployed people who can justify it.

### AREA C

- €35 For the general public.
- €20 For members of any of the institutions that constitute the Alliance.
- €20 For students of an official master's degree, degree or doctorate, as well as unemployed people who can justify it.



#### Classification according to World Bank

High income: high income (AREA)

Lower middle income, Upper middle income: average income (AREA B)

Low income: low income (AREA C)£

These rates will increase starting December 15, 2024:



### AREA A

- €180 For the general public.
- €100 For members of any of the institutions that constitute the Alliance.
- €100 For students of an official master's degree, degree or doctorate, as well as unemployed people who can justify it.

### AREA B

- €60 For the general public.
- €45 For members of any of the institutions that constitute the Alliance.
- €45 For students of an official master's degree, degree or doctorate, as well as unemployed people who can justify it.

### AREA C

- €40 For the general public.
- €25 For members of any of the institutions that constitute the Alliance.
- €25 For students of an official master's degree, degree or doctorate, as well as unemployed people who can justify it.



## ORGANIZING ENTITIES

## WAIMH

World Association for Infantil Mental Health

**World Association for Infantil Mental Health/ / <https://waimh.org/>**

The World Association for Infantil Mental Health (WAIMH) is a non-profit organization for scientific and educational professionals.

The central objective of WAIMH is to promote the mental well-being and healthy development of children around the world, taking into account cultural, regional and environmental variations, and to generate and disseminate scientific knowledge.

More specifically, WAIMH seeks to facilitate:

- Increased knowledge about mental development and disorders in children from conception to three years of age
- The dissemination of scientific knowledge on care, intervention and prevention services for mental disorders and deficiencies in childhood
- The dissemination of evidence-based knowledge on ways to support the developmental transition to parenthood, as well as the healthy aspects of parenting and care environments.
- The international cooperation of professionals concerned with promoting the optimal development of infants, as well as the prevention and treatment of mental disorders in the early years
- Aspects of research, education and interventions in the previous areas



1<sup>ER</sup> CONGRESO INTERNACIONAL  
FAMILIAS Y CRIANZAS: ENCRUCIJADAS ACTUALES



WORLD ASSOCIATION FOR  
**INFANT MENTAL HEALTH**

- WEB [www.waimh.org](http://www.waimh.org)
- INFO [info@waimh.org](mailto:info@waimh.org)



## ASMI - WAIMH SPAIN

Asociación para la Salud Mental Infantil desde la Gestación

**ASMI** (Association for Children's Mental Health from Pregnancy), is a national Pluridisciplinary Scientific Society that emerged as an initiative to join forces between a group of health and childhood education professionals and has become, since March 2006, the Spanish Branch of the WAIMH.

Through international and interdisciplinary cooperation, it promotes clinical intervention, research and training both in the field of normal development and perinatal and early childhood psychopathology.

Through regional and global conferences, as well as through publications, including the Journal of Infant Mental Health, it disseminates scientific, educational and clinical work aimed at young children and their caregivers.

### ASMI Objectives

- Promote the knowledge that childhood, from pregnancy, is a very sensitive and determining period in the bio-psycho-social development of individuals.
- Group together those professionals who are interested in or concerned with children's mental health from the care, prevention, treatment, research and education of the child, during the times of conception, gestation and early childhood.
- Promote interdisciplinary cooperation, inside and outside the Association, to share knowledge.
- Raise awareness among public opinion and the media.



- WEB
- EDITORIAL
- SECRETARY

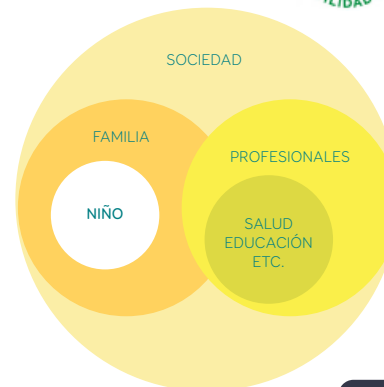
[www.asmi.es](http://www.asmi.es)

[www.asmieditorial.com](http://www.asmieditorial.com)

[secretaria.asmi@gmail.com](mailto:secretaria.asmi@gmail.com)

**Declared of Public Utility**

Public Utility recognition date:: 26-6-19



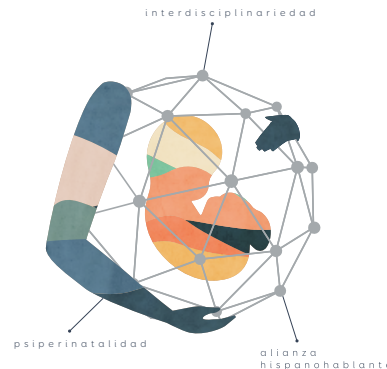
# CONECTA PERINATAL

An unprecedented connection in the Psyperinatal and Family sphere

Promoted by its creation by ASMI WAIMH Spain in June 2020, the Spanish-Speaking Alliance for Perinatal and Family Mental Health “CONECTA PERINATAL” is part of the dynamics of the World Alliance for Maternal Mental Health (<https://globalalliancematernalmentalhealth.org>) to which it has been a member since August 2020, and in close union with the Francophone Alliance for perinatal mental health (<https://alliance-psyperinat.org>), the Maternal Mental Health Alliance: ( <https://maternalmentalhealthalliance.org>) and the Canadian Alliance.

The Spanish-speaking Alliance for Perinatal and Family Mental Health “CONECTA PERINATAL”, which currently brings together 44 Spanish and Spanish-American institutions, aims to bring together the largest number of national and international Spanish-speaking associations of users, scientific societies and socio-health entities without desire. of profit to continuously promote an authentic prioritization of public policies related to the perinatal period, and, especially, its psychological and psychosocial dimensions, in order to achieve coordinated and excellent health and social care, caring for the Perinatal and family mental health.

CONECTA PERINATAL aspires to promote the development of adapted and sustained care for families with the awareness and union of all professional caregivers of that period, facilitating an interdisciplinary and inter-institutional union. ASMI WAIMH Spain is the Spanish affiliate of the Word Association for Infant Mental Health (WAIMH).



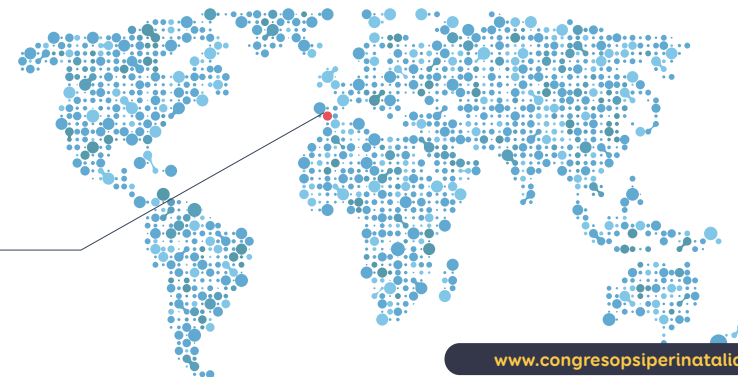
- WEB [www.conectaperinatal.com](http://www.conectaperinatal.com)
- INFORMATION [info@conectaperinatal.com](mailto:info@conectaperinatal.com)



These are the entities linked to CONECTA PERINATAL:



Quebec Alliance for Perinatal Mental Health



3 PILLARS

Spanish-Speaking Alliance  
Psiperinatality  
Interdisciplinarity



## ENTITIES CONNECTED TO CONECTA PERINATAL

### YOU CAN JOIN CONECTA PERINATAL

Foundations, federations, scientific and social associations, national and international, public and private non-profit, and users, to continuously promote an authentic prioritization of public policies related to the perinatal period, especially in its psychological and psychosocial dimension.

You can request to be part of Conecta Perinatal in the following email: [info@conectaperinatal.com](mailto:info@conectaperinatal.com)

### List of entities that are currently part of CONECTA PERINATAL:

- Asociación Argentina de Psicología Perinatal ASAPP (Argentina)
- Asociación Civil Materna, Salud Mental Perinatal (Argentina)
- Asociación Española de Psicología Perinatal AEPP (España)
- Asociación Española de Psicología Clínica y Psicopatología (España)
- Associació de Prematurs de Catalunya "Som Prematurs" (España)
- Asociación Dominicana de Psicología Perinatal ADPP (República Dominicana)
- Asociación para la Salud Mental Infantil desde la Gestación, ASMI WAIMH-ESPAÑA (España)
- Asociación APSA (España)
- Associació de Comares de la Comunitat Valenciana (España)
- Asociación Latinoamericana de Seguimiento Pediátrico y Neonatal (Latinoamérica y Caribe)
- Asociación Nacional de Educación Prenatal. ANEP (España)
- Asociación de Padres de Niños Prematuros APREM (España)
- Asociación para la Promoción e Investigación científica y cultural de la Lactancia Materna APILAM (España)
- Asociación Red Manos Unidas (Argentina)
- Centro de Investigación y Asistencia al Desarrollo CIAD (Argentina)
- Consejo General de Colegios Oficiales de Psicología de España (España)
- Confederación Internacional de Matronas ICM (Internacional)
- Confederación Salud Mental España (España)
- Colegio Oficial de Psicología de la Comunidad Valenciana (España)
- Colegio de Psicólogos de la Provincia de Buenos Aires Distrito X (Argentina)
- EDAI Clinical Services I Training I Research (España)
- Escuelas Infantiles Municipales de Pamplona (España)
- Federació Salut Mental Comunitat Valenciana (España)
- Fundación Manantial - Casa Verde (España)
- Fundación Multifamilias (Argentina)
- Fundación Salud Infantil de Elche (España)
- Fundación Neonatológica para el Recién Nacido y su Familia FUNLARGUIA (Argentina)
- Hospital Pediátrico Dr. Humberto Notti (Argentina)
- Hospital Policial de Montevideo. Uruguay.
- Instituto de Estudios Psicosomáticos y Psicoterapia Médica IEPPM (España)
- Institución Universitaria Colegios de Colombia-UNICOC (Colombia)
- Instituto Universitario de la Familia de la Universidad Pontificia de Comillas (España)
- Instituto Uruguayo de Lactancia Materna (Uruguay)
- Obra Social De Empleados Públicos OSEP (Argentina)
- Red Internacional de Etnografía con Niñas, Niños y Jóvenes RIENN (Internacional)
- Red Uruguay de Salud Mental Perinatal. Uruguay.
- Seminario de Intervención y Políticas Sociales, SIPOSO (España)
- Sección de Psicopatología de la Sociedad Española de Ginecología y Obstetricia SEGO (España)
- Servicio Salud Mental del Hospital Materno Infantil "Héctor Quintana" (Jujuy, Argentina)
- Sociedad Complejidad & Sufrimiento (Chile)
- Sociedad Argentina de Investigación en Observación de Bebés SAIOBB (Argentina)
- Sociedad Argentina de Primera Infancia SAPI (Argentina)
- Sociedad de Estudios Psicosomáticos Iberoamericana SEPIA (España)
- Universidad Nacional de San Luis (Argentina)



## ENTITIES CONNECTED TO CONECTA PERINATAL

An international alliance, a family without borders





## ORGANIZING COMMITTEE

THE TEAM BEHIND THIS CONGRESS

Angela de la Hoz Martínez  
Carmen Ferrándiz Ferragud  
Joan Garcerá Belenguer  
Mercedes Benac Prefaci  
Pablo Palau Garcerá  
Rafael Lisboa dos Santos  
Gina Hernández Santillán  
Lourdes Chacón Bueno  
Elizabeth Ormart  
Pascual Palau Subiela  
José Luis Pedreira Massa  
Rafael Domínguez Aguilar  
Ruth Alejandra Tabora  
Pilar Ariño Arcos  
Gabriela Santaella  
Nuria Camps Bellonch



1<sup>ER</sup> CONGRESO INTERNACIONAL  
FAMILIAS Y CRIANZAS: ENCRUCIJADAS ACTUALES



## SPONSORS AND COLLABORATORS

## SPONSORS

THESE ARE THE ENTITIES THAT SUPPORT THIS INITIATIVE

You can request to be a sponsor in the following email: [colabora@asmi.es](mailto:colabora@asmi.es)



**Agencia KEBO** / [www.keboagency.com](http://www.keboagency.com) / [info@keboagency.com](mailto:info@keboagency.com)

Digital marketing agency specialized in corporate image as well as the creation and digital organization of conferences, conferences and events. The agency also covers editorial services, layout and design, web development, graphic design, illustration, among others.



¡GRACIAS!

THANK YOU

:)

¡GRACIAS!  
THANK YOU!



WORLD ASSOCIATION FOR  
INFANT MENTAL HEALTH



Conecta Perinatal

WEB  
INFORMATION  
COLABORATIONS

[www.congresopsiperinatalidad.com](http://www.congresopsiperinatalidad.com)  
[info@congresopsiperinatalidad.com](mailto:info@congresopsiperinatalidad.com)  
[colabora@asmi.es](mailto:colabora@asmi.es)

EMISIÓN, DISEÑO, COMUNICACIÓN,  
SECRETARÍA TÉCNICA DEL EVENTO  
[WWW.KEBOAGENCY.COM](http://WWW.KEBOAGENCY.COM)  
[PABPALGAR@GMAIL.COM](mailto:PABPALGAR@GMAIL.COM)

